

16B4CTIM

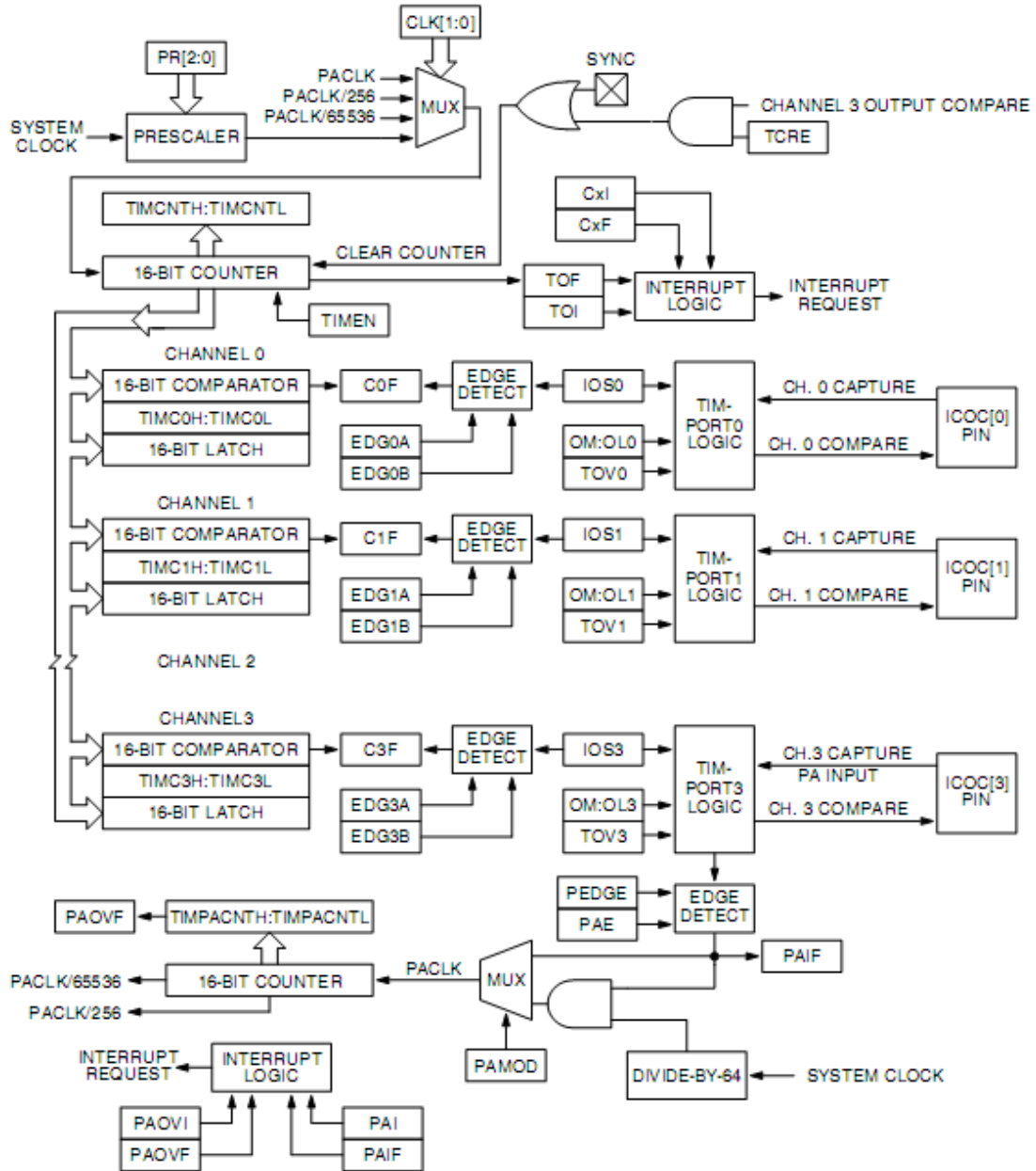
16-Bit 4-Channel Timer Module

Summary

The timer consists of a 16-bit programmable counter driven by a seven-stage programmable prescaler, four input capture/output compare channels, and one pulse accumulator. A timer overflow function allows software to extend the timing capability of the system beyond the 16-bit range of the counter. The input capture and output compare functions allow simultaneous input waveform measurements and output waveform generation. The input capture function can capture the time of a selected transition edge. The output compare function can generate output waveforms and timer software delays. The 16-bit pulse accumulator can operate as a simple event counter or a gated time accumulator. The pulse accumulator shares timer channel 3 when in event mode.

Features

- Full-duplex operation
- Standard mark/space non-return-to-zero (NRZ) format
- 13-bit baud rate selection
- Programmable 8-bit or 9-bit data format
- Separately enabled transmitter and receiver
- Separate receiver and transmitter central processor unit (CPU) interrupt requests
- Receiver framing error detection
- Hardware parity checking
- 1/16 bit-time noise detection
- Interrupt-driven operation with eight flags
- Two receiver wakeup methods
- General-purpose, I/O capability



Timer Block Diagram

To obtain more information about the Time or other C*Core™ products, please contact the C*Core Technology Co., Ltd. by phone: 0512-68091377, email: support@china-core.com or web: <http://www.china-core.com>.

C*Core™ is a trade mark of C*Core Co., Ltd.